



**WARDS
SEA KING**

**OUTBOARD
MOTOR**

PARTS CATALOG

MW 102

1975

25

B.I.A. CERTIFIED BRAKE H.P. AT 5000 R.P.M.

**MODEL
VWB-52125**

Printed in U.S.A.

IGD

SEA KING—SOLD EXCLUSIVELY BY **MONTGOMERY WARD**

Engine Cover and Support Plate

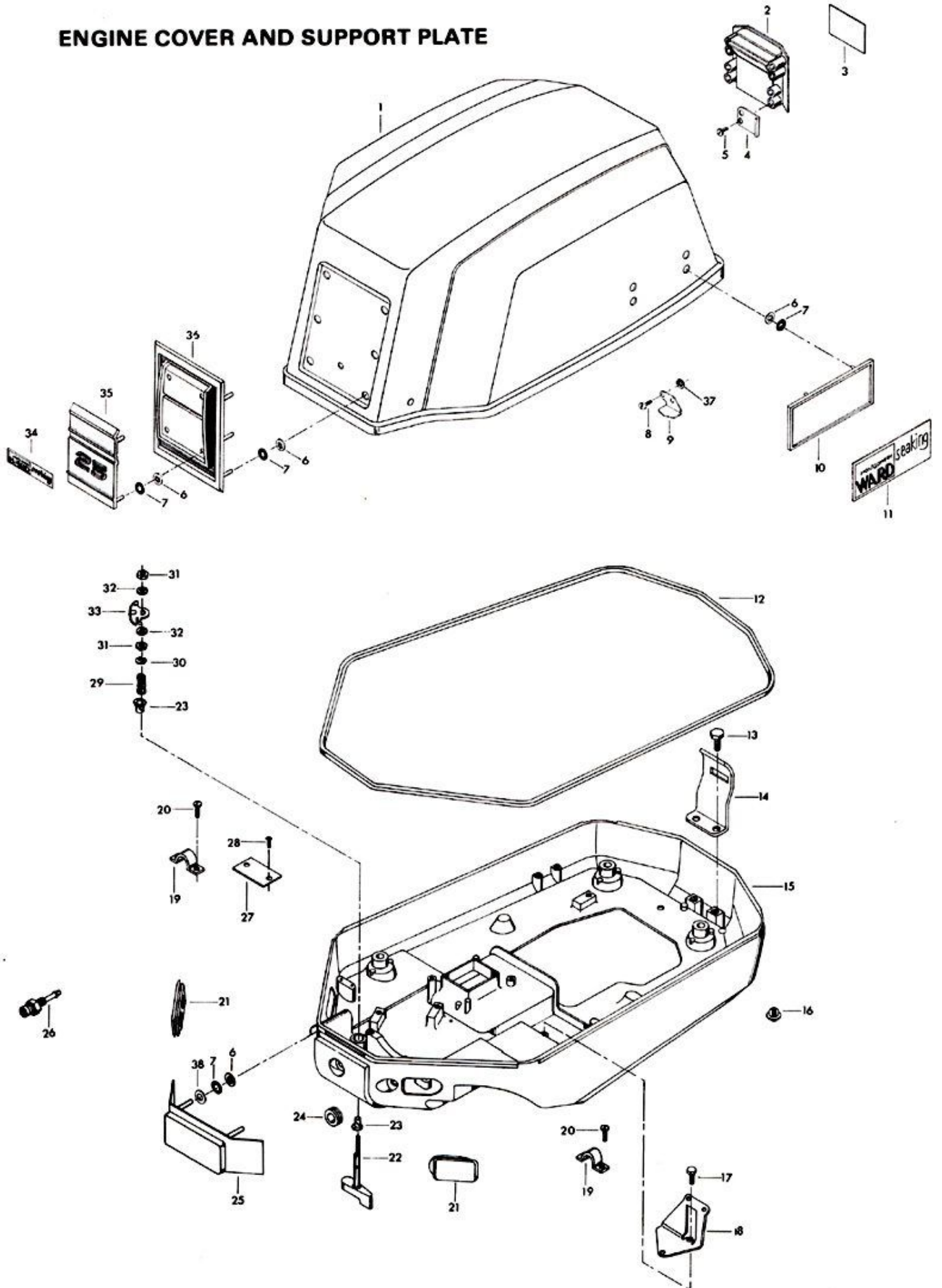
ILLUS. NO.	PART NO.	QTY.	DESCRIPTION
1	S497712	1	Engine cover w/front and rear retainers
2	S497269	1	Tilt handle
3	497528	1	Insert, tilt handle
4	497864	4	Retainer, tilt handle
5	1728	8	Pan hd screw, 10 x 3/8
6	1753	20	Fastener
7	85735	20	Seal
8	1475	2	Fill hd screw, 10 - 24 x 1/2
9	A458480	1	Retainer, engine cover rear w/screws and nuts
10	451392	2	Plate, side
11	A451892	2	Insert, plate side
12	85756	1	Packing, engine cover
13	1922	2	Hex hd machine screw, 1/4 - 20 x 5/8
14	461774	1	Bracket, retainer rear
+15	458038-2	1	Support plate
16	1632	1	Plasti-plug
17	1236	2	Hex cap screw, 1/4 - 20 x 1/2
18	458371	1	Bracket, remote throttle cable
19	154317	2	Clamp, remote cable
+20	2107	4	Slotted fill hd screw w/spring lockwasher, 10 - 24 x 5/8
21	497840	2	Grommet
22	A413469	1	Cover latch handle w/shaft
23	307818	2	Bearing latch shaft
24	53504	1	Grommet, support plate
+25	460163-1	1	Cover, support plate
26	434767	1	Bushing, fuel line
27	A197395-3	1	Plate, identification w/screws
28	1293	2	Drive screws
29	183300	1	Spring, latch shaft
30	185764	1	Retaining ring
31	1515	2	Hex nut, 5/16 - 18
32	8096	2	Spring lockwasher
33	89777-1	1	Cam, engine cover latch
34	A451512	1	Insert, plate front
35	497893	1	Plate, insert "25"
36	401711-1	1	Plate, front
37	7011	2	Hex nut, 10 - 24
38	8011	1	Plain washer

+Denotes new part number

NOTE

To obtain identification plate, order part number A197395-3. Order for identification plate must be accompanied by a notarized statement from a law enforcement agency verifying that the plate is lost or damaged beyond repair. This statement must also include name and address of owner and model and serial number of motor.

ENGINE COVER AND SUPPORT PLATE



Magneto

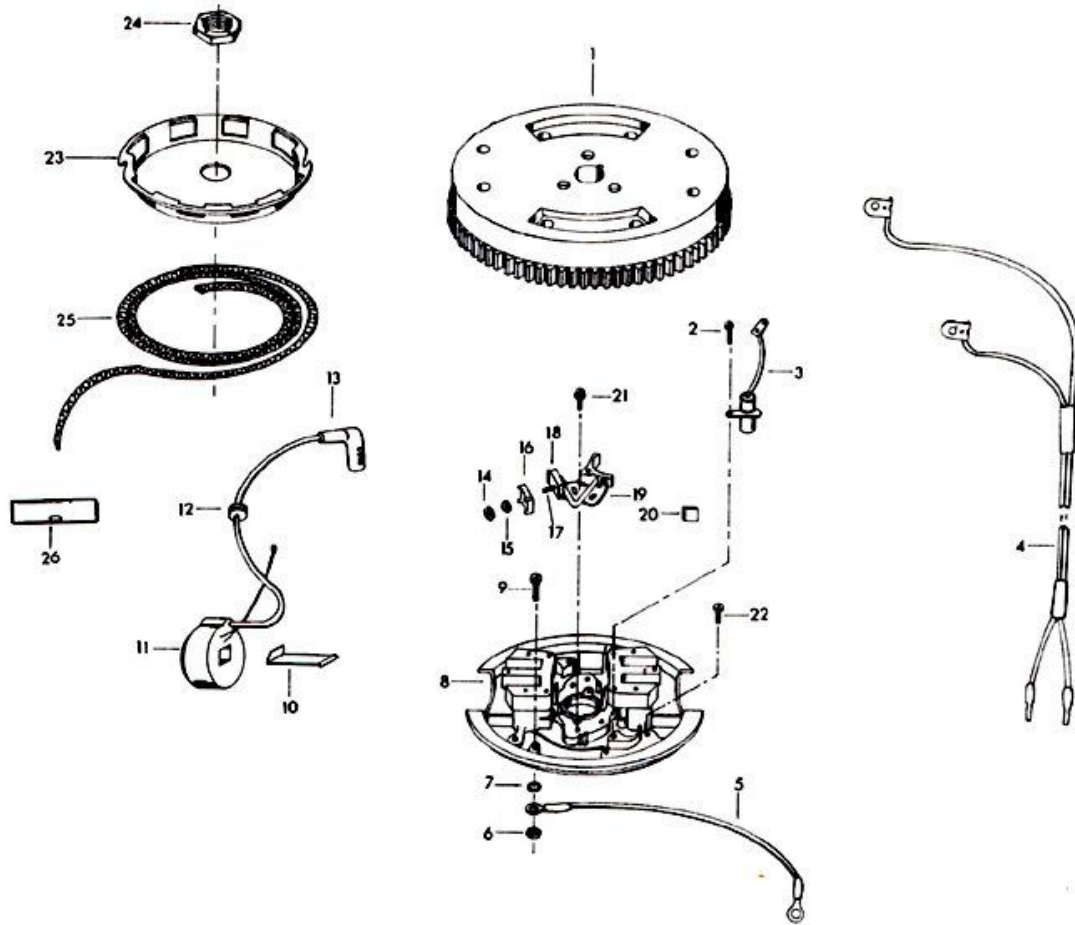
ILLUS. NO.	PART NO.	QTY.	DESCRIPTION
1	460097	1	Flywheel
2	12083	2	Condenser mounting screw
3	12181-1	2	Condenser
4	12186	1	Ground lead
5	460664	1	Stator ground wire
6	1513	1	Hex nut
7	8059	1	Spring lockwasher
8	12346	1	Stator plate w/laminations
9	1092	1	Fill hd screw, 10 - 32 x 5/8
10	12146	2	Coil wedge spring
11	A12345	2	Coil w/lead wire
12	12088	2	Grommet lead wire
13	K750-1	2	Sparkie w/spring
14	12127	2	Stud nut
15	8055	2	Lockwasher
16	12128	2	Insulator, outside
17	12142	2	Connection stud
18	12129	2	Insulator, inside
19	12153	2	Breaker point set
20	12228	1	Cam wiper felt
21	12170	4	Contact screw w/lockwasher
22	2010	3	Fill hd screw w/spring lockwasher, 10 - 32 x 9/16
23	458456	1	Hand starter collar
24	2021	1	Flywheel nut
25	A27232	1	Emergency starter rope w/handle
26	18132-1	1	Handle, starter rope
		1	Stator plate complete, order component parts
		1	Magneto complete, order component parts

Electrical Components

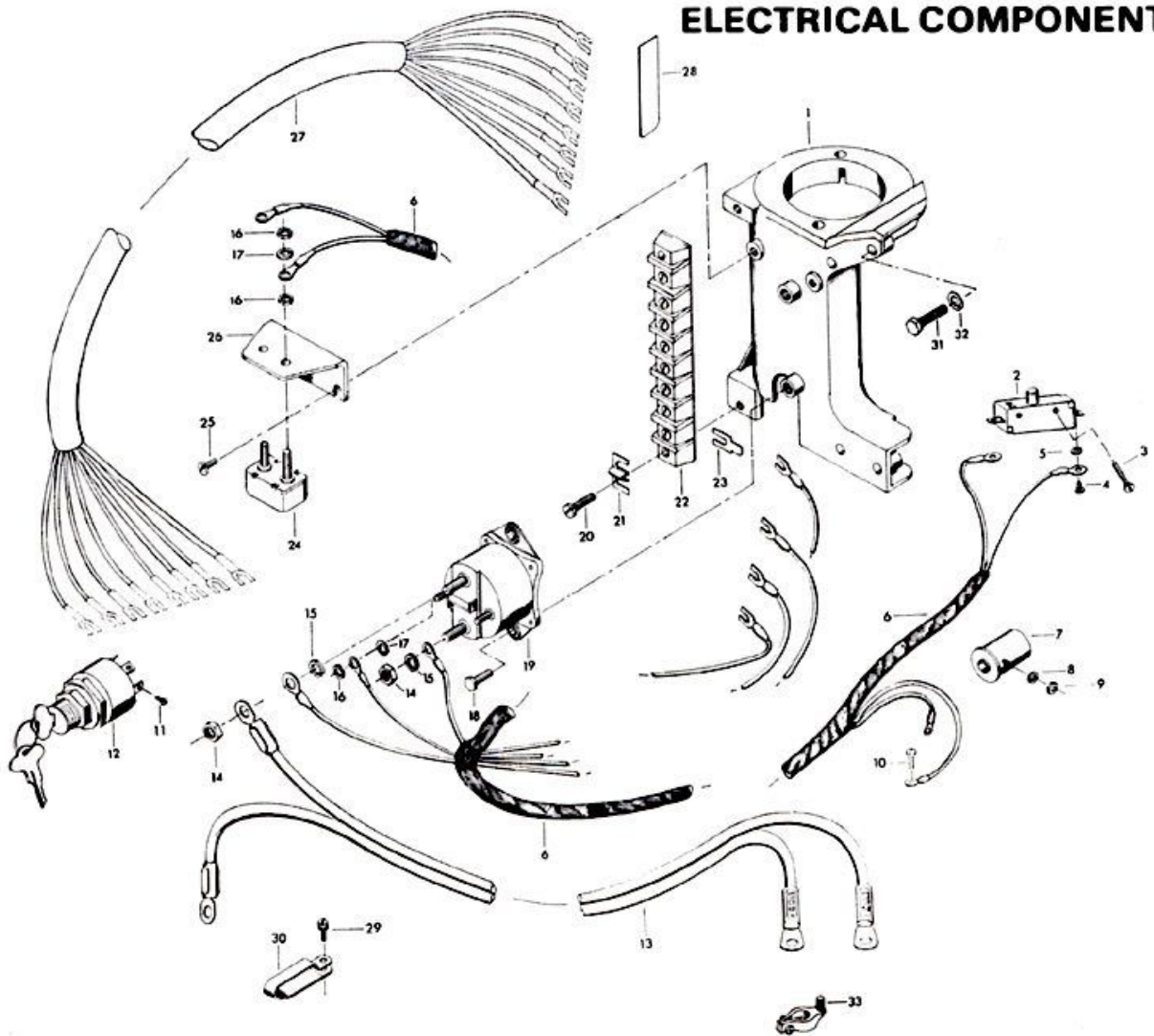
ILLUS. NO.	PART NO.	QTY.	DESCRIPTION
1	460427	1	Bracket, starter motor
2	84449	1	Switch, starter interlock
3	2016	2	Fill hd machine screw, 6 - 32 x 7/8
4	1645	2	Round hd screw, 6 - 32 x 1/4
5	1704	2	Internal tooth lockwasher
6	460774	1	Wiring harness
7	85924	1	Choke solenoid
8	8056	1	Spring lockwasher
9	1647	1	Hex nut
10	1077	1	Fill hd screw, 10 - 24 x 1/4
11	1280	5	Pan hd screw, 8 - 32 x 1/4
12	70H07	1	Ignition switch (Accessory Item)
13	381896-4	1	Cable, battery entry
14	1515	2	Hex nut
15	8096	2	Spring lockwasher
16	1513	6	Hex nut, 10 - 32
17	1975	4	Spring lockwasher
18	1854	2	Hex cap screw, 1/4 - 20 x 5/8
19	460917	1	Starter relay
20	1648	2	Slotted pan hd screw, 10 - 24 x 3/4
21	307317	1	Clip, terminal block ground
+22	K289497-2	1	Terminal block
23	296898	2	Terminal
24	91460-2	1	Circuit breaker
25	1979	2	Pan hd screw, 10 - 24 x 1/2
26	91446-1	1	Bracket, circuit breaker
27	85843-1	1	Cable, electric control
28	460398	1	Decal, wiring
29	1734	1	Fill hd machine screw w/spring lockwasher, 1/4 - 20 x 1/2
30	407446	1	Clamp, battery cable
31	1916	2	Hex hd screw, 1/4 - 20 x 1 1/8
32	8083	2	Spring lockwasher
33	71H26	1	Battery terminal kit (Accessory Item)

+ Denotes new part number

MAGNETO



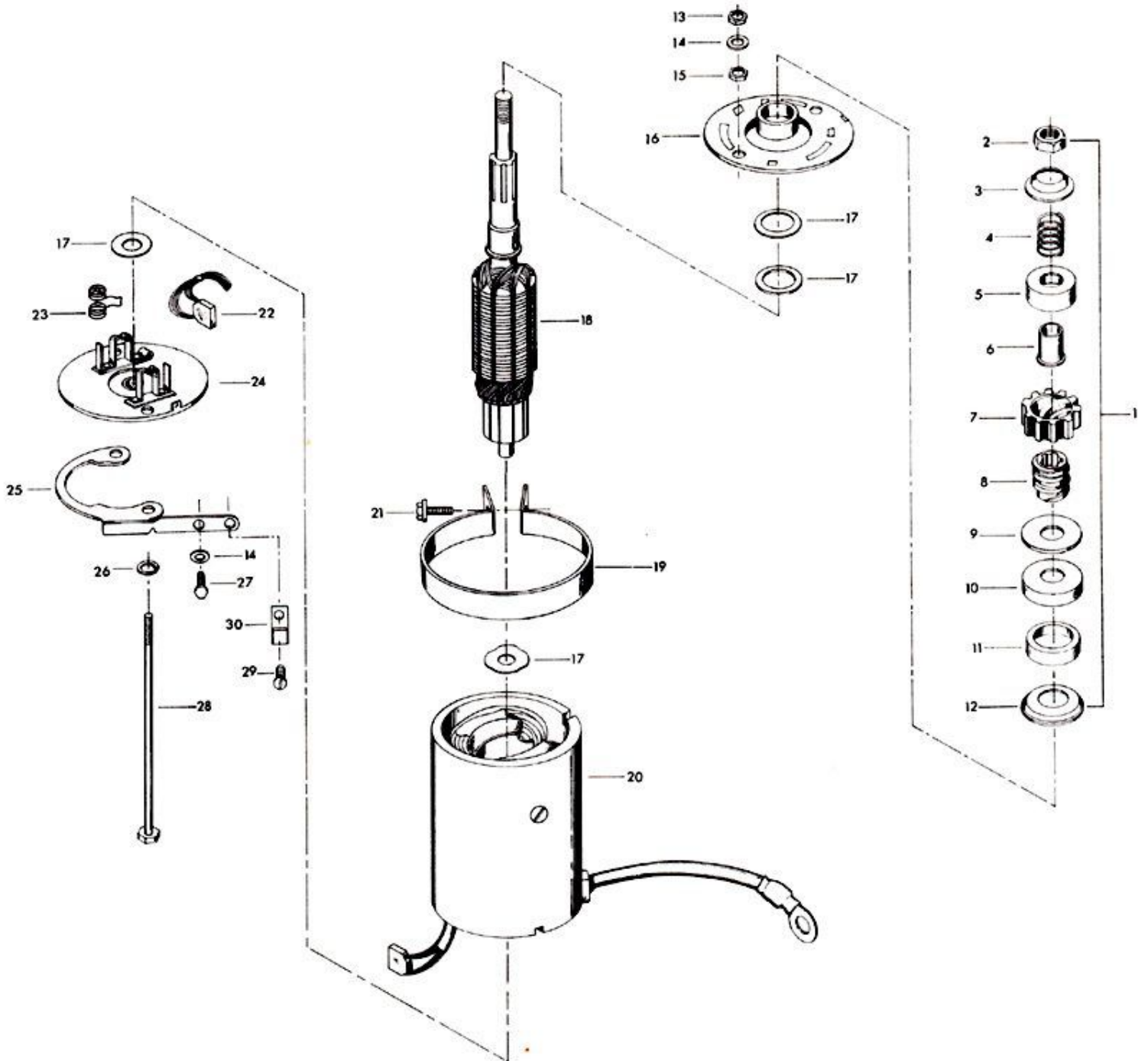
ELECTRICAL COMPONENTS



Electric Starter

ILLUS. NO.	PART NO.	QTY.	DESCRIPTION
1	15095	1	Bendix drive
2	15087	1	Hex nut
3	15109	1	Cup, stop
4	15102	1	Spring, anti-drift
5	15107	1	Cup, pinion
6	15108	1	Sleeve
7	15103	1	Pinion
8	15084	1	Screw shaft
9	15091	1	Washer
10	15105	1	Cup, cushion
11	15106	1	Cushion
12	15104	1	Cup, cushion thrust
13	1514	2	Hex jam nut, 1/4 - 20
14	8083	4	Spring lockwasher
15	1341	2	Hex nut, 1/4 - 20
16	15021-1	1	Head assembly drive end
17	15098	1	Thrust washer package
18	15010	1	Armature
19	460573	1	Clamp, starter motor
20	15117	1	Frame and field assembly
21	2040	1	Taptite hex hd screw w/spring lockwasher, 1/4 - 20 x 5/8
22	15015	1	Brush set
23	15002	1	Spring set
24	15019-1	1	Head assembly commutator end
25	460675	1	Bracket, starter mounting lower
26	8083	2	Spring lockwasher
27	1916	1	Hex hd machine screw, 1/4 - 20 x 1 1/8
28	15097	1	Thru bolt package
29	1100	1	Slotted fill hd M. screw, 1/4 - 20 x 1 1/8
30	286772-1	1	Clamp, fuel pump to carburetor hose
	S460955	1	Starter motor complete w/item 25

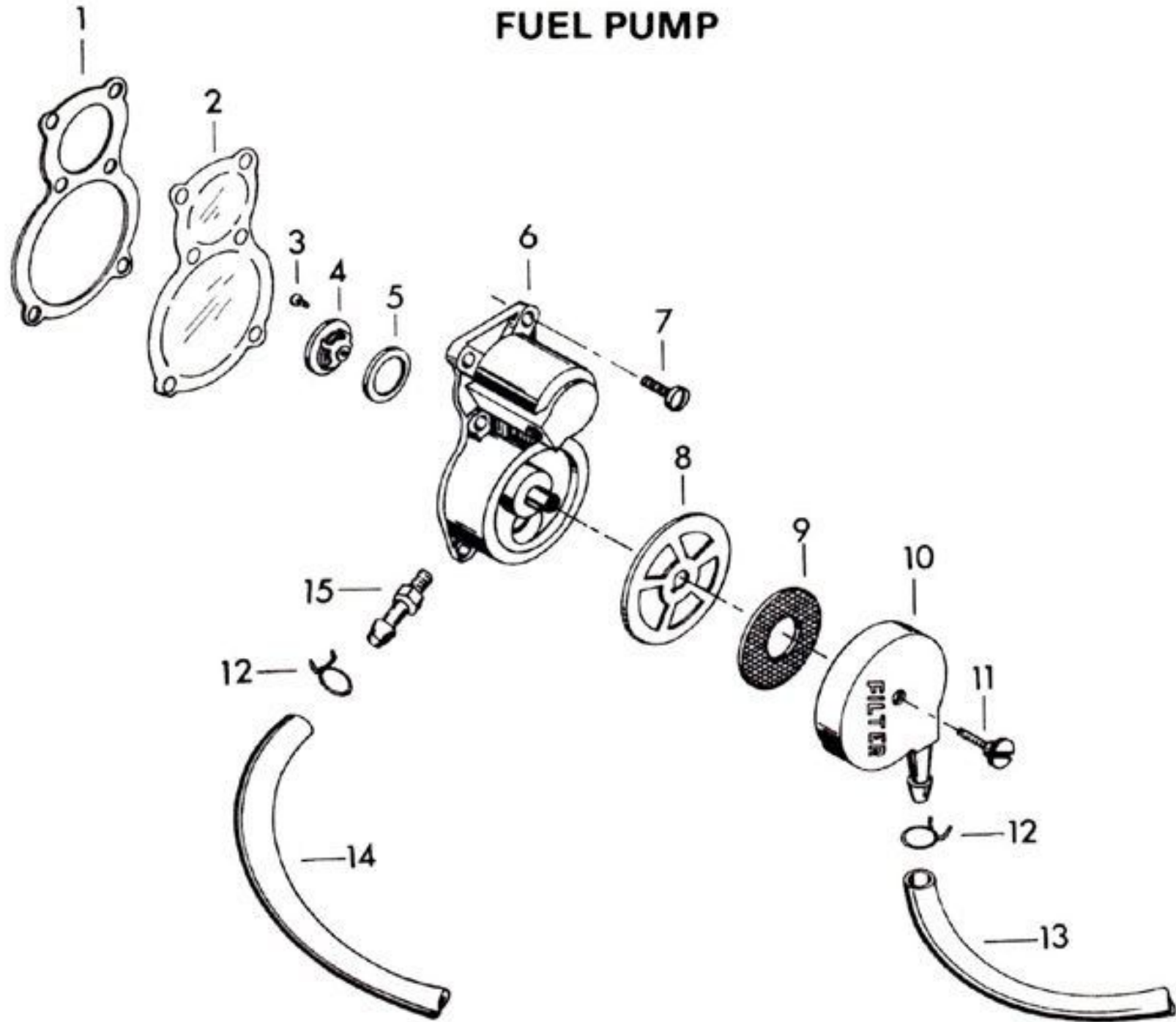
ELECTRIC STARTER



Fuel Pump

ILLUS. NO.	PART NO.	QTY.	DESCRIPTION
1	438760	1	Fuel pump gasket
2	438747	1	Fuel pump diaphragm
3	1860	2	Binding hd machine screw, 6 - 32 x 1/4
4	177330	3	Fuel pump valve
5	84792	3	Fuel pump gasket
6	A438431	1	Fuel pump body w/valves
7	1108	6	Fill hd machine screw, 1/4 - 20 x 3/4
8	438617	1	Gasket, fuel pump bowl
9	438653	1	Screen, fuel pump
10	438500	1	Fuel pump bowl
11	438165	1	Screw, fuel pump bowl
12	97772	4	Fuel line clamp
13	A85754-1	1	Hose, fuel pump to bushing
14	458754	1	Hose, fuel pump to carburetor
15	438801	1	Fitting, fuel pump body

FUEL PUMP



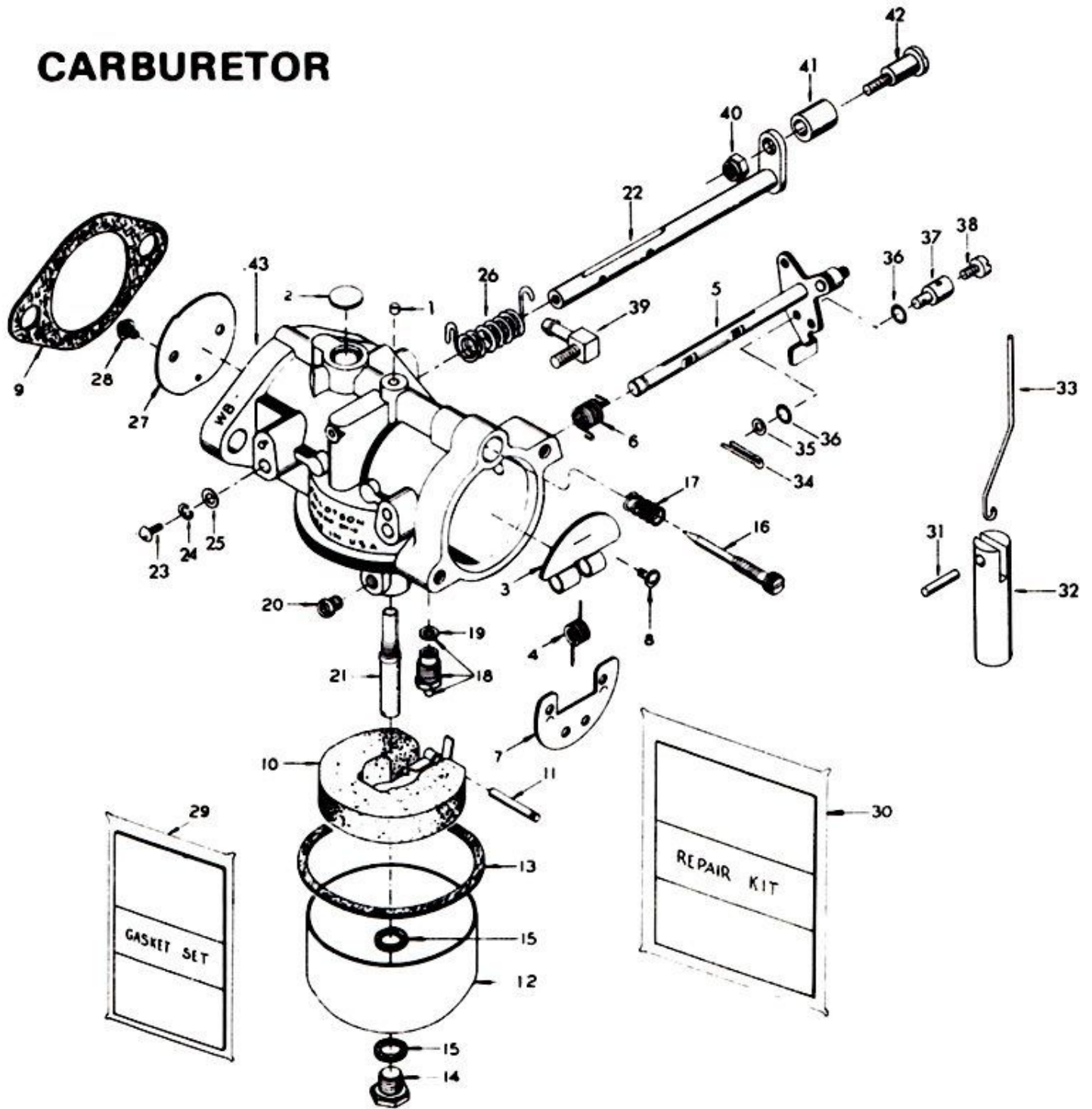
Carburetor

ILLUS. NO.	PART NO.	QTY.	DESCRIPTION
1	* 010588	1	Body channel cup plug
2	* 04326	1	Body channel welch plug
3	012251	1	Choke relief valve
4	010883	1	Choke relief valve spring
5	016562	1	Choke shaft and lever
6	* 016397	1	Choke shaft return spring
7	012250	1	Choke shutter
8	010280	2	Choke shutter retaining screw and lockwasher
9	40906-1	1	Flange gasket
10	013554	1	Float
11	* 013944	1	Float lever pin
12	013552	1	Fuel bowl
13	015623	1	Fuel bowl gasket
14	013945	1	Fuel bowl retaining screw
15	02510	2	Fuel bowl retaining screw gasket
16	014166	1	Idle mixture screw
17	* 011103	1	Idle mixture screw spring
18	* 010790	1	Inlet needle, seat and gasket
19	010165	1	Inlet seat gasket
20	014108	1	Main fuel jet (.064) (Standard)
21	* 015213	1	Main nozzle
22	016561	1	Throttle shaft and lever
23	06393	1	Throttle shaft position retaining screw
24	06396	1	Throttle shaft position retaining screw lockwasher
25	03804	1	Throttle shaft position retaining screw washer
26	* 016563	1	Throttle shaft return spring
27	016559	1	Throttle shutter
28	* 08942	2	Throttle shutter retaining screw and lockwasher
29	* 10025	1	Gasket set
30	10027	1	Repair parts kit, includes all items marked with an asterisk (*)
31	2033	1	Groove pin
32	391926-1	1	Plunger, choke solenoid
33	460925	1	Rod, choke solenoid
34	1014	1	Cotter pin
35	8088	1	Plain washer
36	184579	2	Seal
37	184033-1	1	Swivel, choke arm
38	1059	1	Fill hd screw, 6 - 32 x 1/4
39	84314-2	1	Elbow
40	1997	1	Lock nut
41	92759	1	Roller, throttle cam follower
42	333316	1	Shaft, throttle roller
43	461061-1	1	Carburetor complete (WB19B)

OPTIONAL SIZE MAIN FUEL JETS (Use Only At Altitudes Indicated)

	<u>Standard</u>	<u>1250-3750 Ft.</u>	<u>3750-6250 Ft.</u>	<u>6250-8250 Ft.</u>
Size	.064	.062	.060	.058
Part No.	014108	014187	014186	015337

CARBURETOR

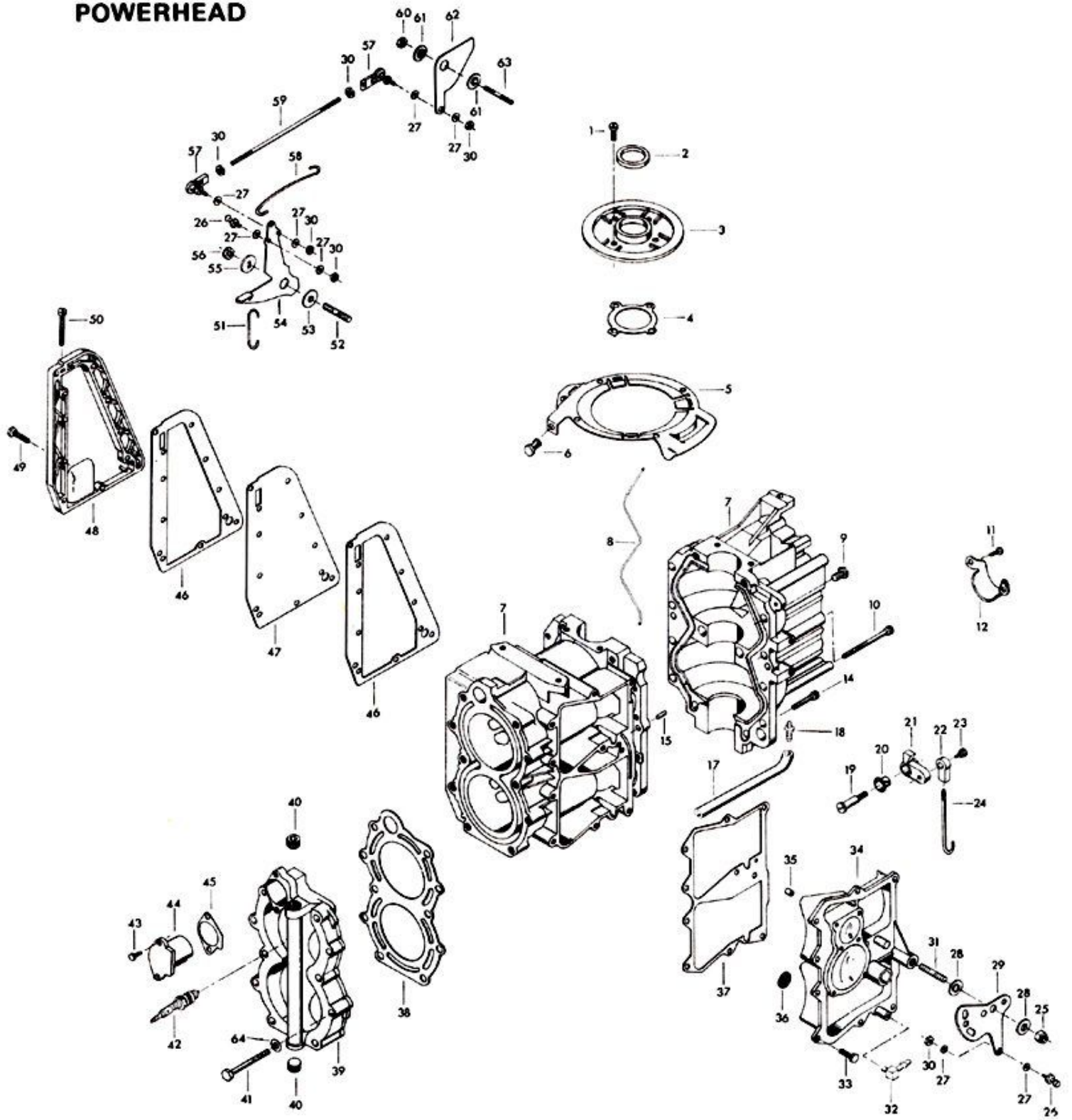


Power Head

ILLUS. NO.	PART NO.	QTY.	DESCRIPTION
1	1107	4	Fill hd screw, 1/4 - 20 x 3/4
2	458146	1	Seal, crankshaft upper main
3	A458144	1	Crankshaft bearing cage
4	458277	1	Gasket, crankshaft bearing cage
+ 5	A504082	1	Magneto stator ring
6	1727	1	Plasti-rivet
+ 7	*A458010-1	1	Cylinder w/crankcase cover, screws and dowel pins
8	*269122-1	1	Seal, crankcase parting line
9	1864	8	Hex slotted hd screw, 1/4 - 20 x 3/4
10	*2005	2	Hex socket hd cap screw, 5/16 - 18 x 2 3/4
11	1689	2	Hex cap screw, 1/4 - 20 x 1/2
12	460317	1	Clamp, choke solenoid
14	*2013	4	Hex socket hd cap screw, 5/16 - 18 x 1 1/4
15	*8559	2	Dowel pin
17	458254	1	Hose, drain
18	366801	1	Fitting
19	85026	1	Swivel, shift interlock lever
20	307818	1	Bearing
+21	458977-2	1	Lever, shift interlock
22	84035-2	1	Bearing, shift interlock rod
23	84026	1	Swivel, shift interlock bearing
24	458531	1	Rod, shift interlock
25	7004	1	Lock nut, 3/8 - 16
26	98273	2	Rod end connector stud
27	8058	8	Internal tooth lockwasher
28	269052	2	Bearing, shift lever
+29	A458876-2	1	Lever, gear shift
30	1513	6	Hex nut, 10 - 32
31	440209	1	Stud, gear shift lever
32	436314-1	1	Elbow, drain hose
33	1922	10	Hex hd screw, 1/4 - 20 x 5/8
+34	A504222	1	Transfer port cover
35	A213740-1	2	Check valve
36	429811	2	Screen, cylinder drain
37	458223	1	Gasket, transfer port cover
38	458529	1	Gasket, cylinder head
39	A458518	1	Cylinder head
40	458109	2	Plug, cylinder head
41	458936	10	Screw, cylinder head
42	S174227	2	Spark plug (L-4-J)
43	1854	2	Hex cap screw, 1/4 - 20 x 5/8
44	458066	1	Thermostat cover
45	458067	1	Gasket, thermostat cover
46	458154	2	Gasket, exhaust port plate
47	458151	1	Exhaust port plate
48	458152	1	Exhaust port cover
49	1953	10	Hex hd screw, 1/4 - 20 x 1
50	458693	1	Screw, remote idle stop
51	458445	1	Link, magneto control shaft
52	286440	1	Stud, magneto control lever
53	183813	1	Bearing
54	2A458081	1	Magneto control lever
55	286282	1	Washer
56	1803	1	Stop nut
57	A269141-1	2	Joint ball assembly
58	458509	1	Link, magneto stator
59	458502	1	Rod, throttle cam
60	1910	1	Lock nut
61	269319	2	Bearing, throttle cam
62	458192	1	Throttle cam
63	433209	1	Stud, throttle cam
64	1987	10	Plain washer
	+C461010-1	1	Short block (not shown) Includes all items marked with an asterisk (*). Also refer to page 12
	G1010	1	Gasket set (not shown)
	K-744	1	Engine touch-up paint spray bomb Frost White Flat
	K-748	1	Engine touch-up paint spray bomb Gold enamel

+Denotes new part number

POWERHEAD



Crankshaft and Piston Group

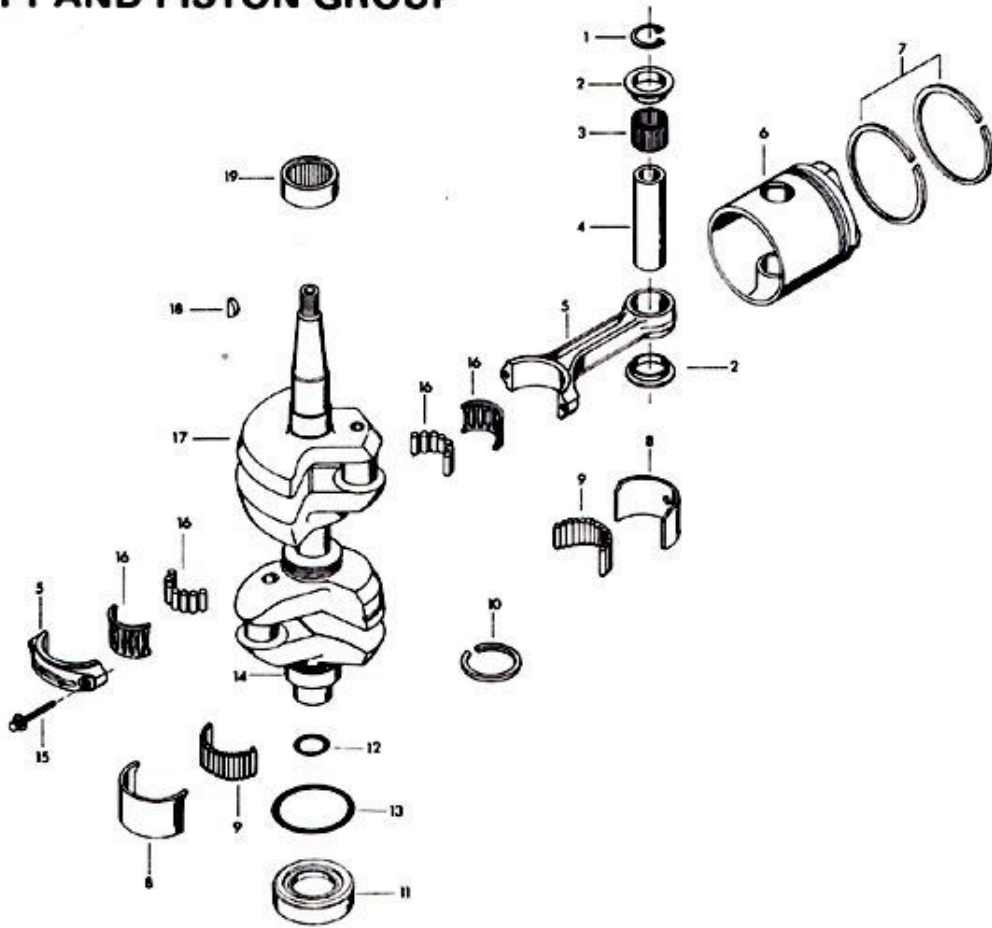
ILLUS. NO.	PART NO.	QTY.	DESCRIPTION
1	*90096	4	Retainer, piston pin
2	*366215	4	Spacer, piston pin
3	*335217	2	Bearing, piston pin
4	*458017	2	Piston pin
5	*S366016-3	2	Connecting rod w/cap and screws
6	*458015-1	2	Piston
7	*A458260	1	Piston ring set (4 per set)
8	*A458655	1	Liner, center main
9	*A458571	1	Roller, center main
10	*458579	1	Seal, crankcase
11	*2A458581	1	Collar w/lower crankshaft seal
12	461342	1	Seal, driveshaft spline
13	*455305	1	Seal, crankshaft collar
14	*286028-1	1	Crankshaft lower main bearing
15	*85634-1	4	Screw, connecting rod
16	*K85228	2	Bearing cage w/rollers (16 per set)
17	*A461018	1	Crankshaft w/lower main bearing
18	458498	1	Flywheel key
19	*458028	1	Bearing, crankshaft upper main
	3SA458260	1	Piston rings (4 per set) .030 oversize (not shown)
	SA458260	1	Piston rings (4 per set) .010 oversize (not shown)
	3SA458015	2	Piston .030 oversize (not shown)
	SA458015	2	Piston .010 oversize (not shown)

*Indicates contents of short block. Also refer to Power Head page.

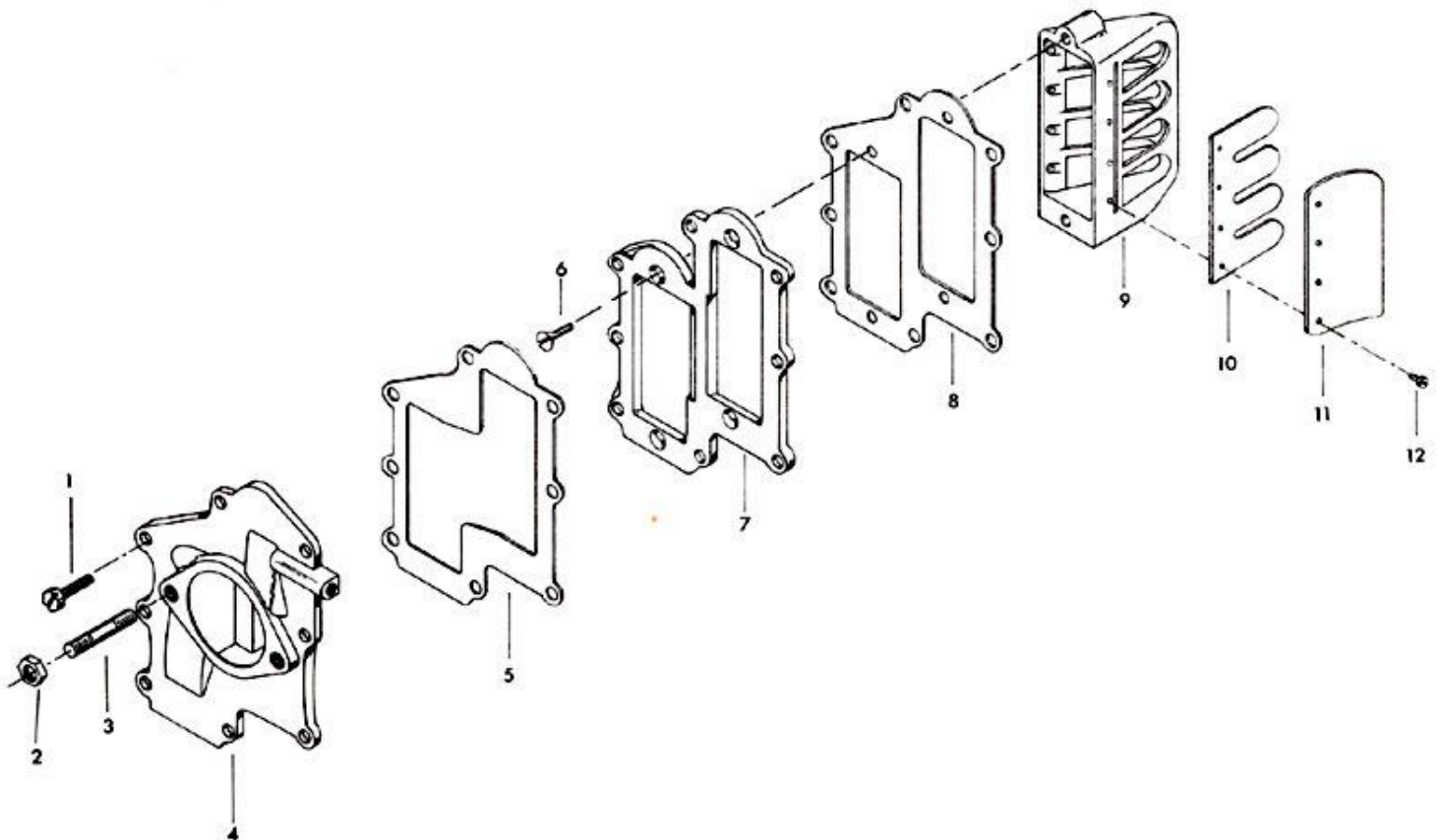
Reed Plate

ILLUS. NO.	PART NO.	QTY.	DESCRIPTION
1	1915	8	Hex hd screw, 1/4 - 20 x 7/8
2	1515	2	Hex nut, 5/16 - 18
3	40209	2	Carburetor stud
4	A458167	1	Carburetor adapter
5	433168	1	Gasket, carburetor adapter
6	1141	4	Flat hd screw, 10 - 24 x 1/2
7	433404	1	Deflector plate
8	433406	1	Gasket, deflector plate
9	A458158	2	Reed plate w/reeds, stops and screws
10	316160	4	Reed
11	88161-3	4	Reed stop
12	1298	16	Round hd screw w/lockwasher, 6 - 32 x 1/4

CRANKSHAFT AND PISTON GROUP



REED PLATE

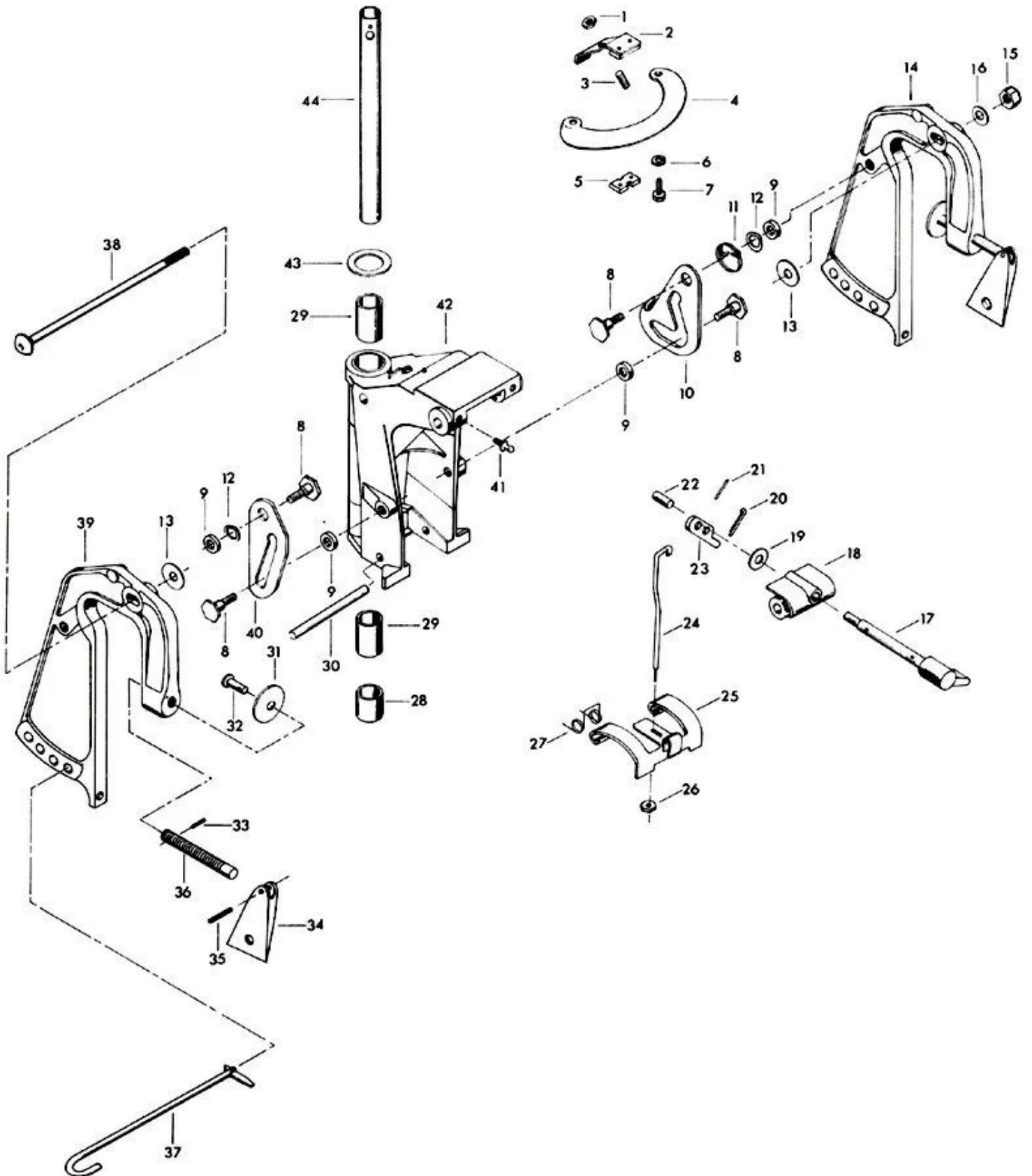


Swivel Bracket Group

ILLUS. NO.	PART NO.	QTY.	DESCRIPTION
1	7024	1	Stop nut
2	A901742	1	Friction shoe adjusting arm
3	901822-1	1	Stud, swivel bracket
4	901775	1	Plate, friction shoe
5	901631-1	1	Friction shoe
6	8083	2	Spring lockwasher
7	1689	2	Hex cap screw, 1/4 - 20 x 1/2
8	286422-1	4	Pivot, tilt lock
9	286451	4	Spacer, tilt lock
10	436541	1	Tilt lock (port)
11	286544-1	1	Spring, tilt lock
12	1666	2	Bowed spring lockwasher
13	901286-1	2	Washer, swivel bracket friction
14	S385532	1	Stern bracket port w/clamp screw and foot
15	7001	1	Stop nut
16	1656	1	Plain washer
+17	483827	1	Lever, reverse lock
+18	483726	1	Bearing
19	8094	1	Plain washer
20	1014	1	Cotter pin
21	1836	1	Spring pin
+22	483884	1	Bearing
23	366364	1	Arm, reverse lock
+24	483510	1	Link, reverse lock
+25	483349	1	Reverse lock
26	1669	1	Nut
+27	483300	1	Spring
28	183990	1	Spacer, kingpin
29	901169-1	2	Bearing, swivel bracket
30	2095	1	Spring pin
31	24074	2	Clamp screw foot
32	66480	2	Stud
33	8537	2	Spring pin
34	53075-1	2	Handle, stern bracket clamp screw
35	1638	2	Spring pin
36	A324073-2	1	Stern bracket clamp screw w/foot, stud and handle
37	A324113	1	Stern bracket lock bar w/end
38	145037-1	1	Pivot bolt
39	S385032	1	Stern bracket starboard w/clamp screw and foot
40	385433	1	Tilt stop
41	213274	3	Grease fitting
+42	A483072	1	Swivel bracket w/bearings and grease fittings
43	901011	1	Washer, swivel bracket
44	190019-1	1	Kingpin
	369390-1	1	Decal, reverse lock (not shown)

+Denotes new part number

SWIVEL BRACKET GROUP

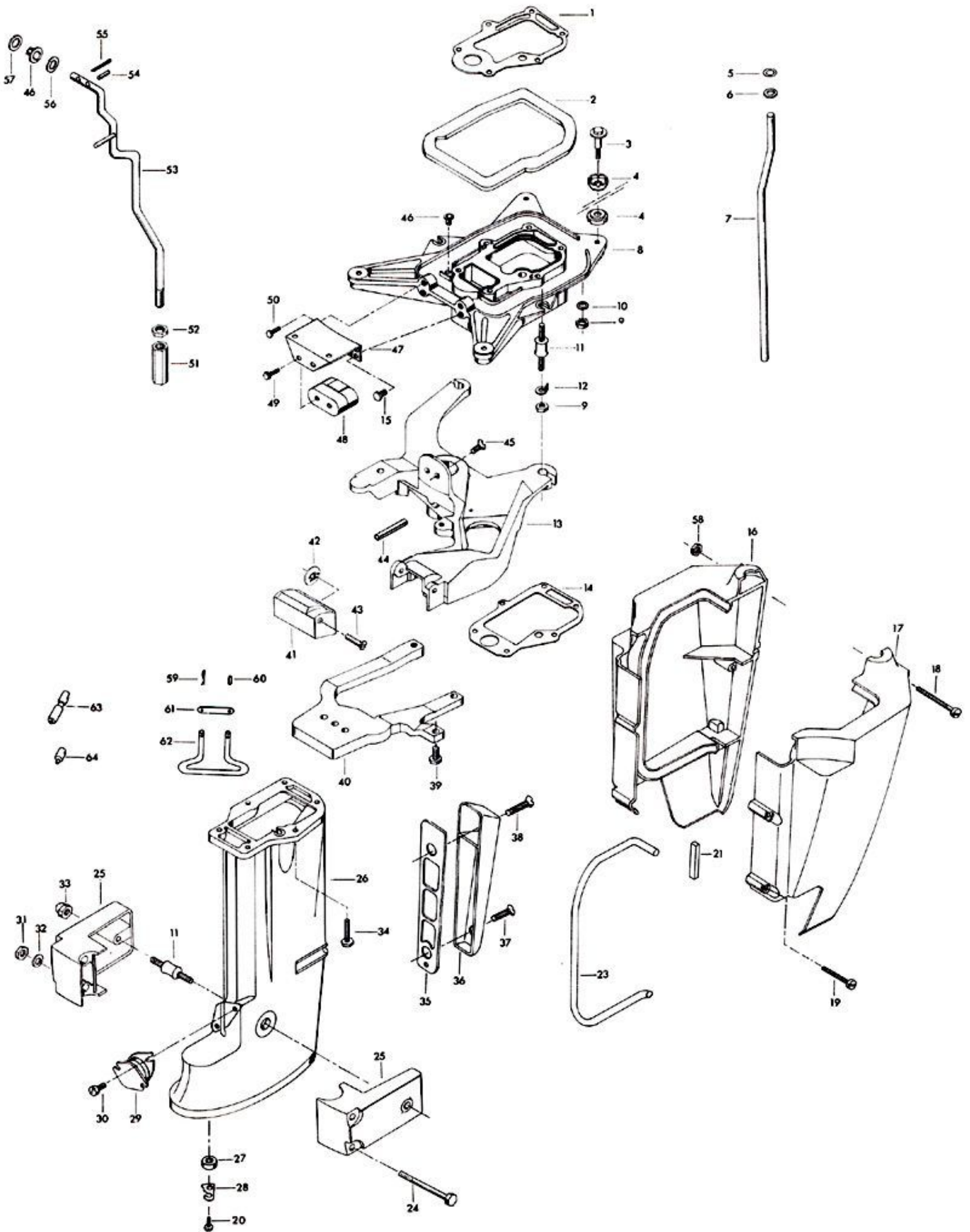


Motor Leg

ILLUS. NO.	PART NO.	QTY.	DESCRIPTION
1	458279	1	Gasket, cylinder exhaust
2	183756-1	1	Packing, support plate
3	458887	4	Fastener, support plate mount
4	458347	8	Mount, support plate
5	24342	1	Seal, water line upper
6	2014	1	Plain washer
7	142244	1	Inlet water line
8	458963	1	Plate, shock mount
9	1346	4	Hex nut, 3/8 - 16
10	1778	2	Plain washer
11	458962	4	Shock mount
12	458076	2	Tab shock mount side
13	458940-1	1	Plate, kingpin mounting
14	458453	1	Gasket, leg exhaust
15	1502	2	Hex cap screw w/spring lockwasher, 1/4 - 20 x 5/8
16	A190145-1	1	Motor leg cover, starboard
17	A190135-1	1	Motor leg cover, port
18	1504	3	Fill hd screw, 1/4 - 20 x 1 1/4
19	1583	2	Fill hd screw, 1/4 - 20 x 1 5/8
20	1064	1	Fill hd screw, 8 - 32 x 3/8
21	190323-1	1	Packing, leg cover upper front
23	190321-1	2	Packing, leg cover port and starboard
24	1491	2	Hex cap screw, 5/16 - 18 x 3 1/4
25	461707-1	2	Cover, shock mount lower
+26	461133-2	1	Motor leg
27	50618	1	Seal, gear shift rod upper
28	50671-1	1	Retainer, gear shift rod seal
29	183346-1	1	Shock mount lower thrust
30	1129	4	Fill hd screw, 5/16 - 18 x 1/2
31	1515	2	Hex nut, 5/16 - 18
32	8096	2	Spring lockwasher
33	2009	2	Acorn nut, 3/8 - 16
34	458166-2	6	Screw, motor leg to cylinder
35	190833	1	Gasket, motor leg exhaust cover
36	190832-2	1	Cover, motor leg exhaust
37	1150	1	Flat hd screw, 1/4 - 20 x 1 1/8
38	1148	1	Flat hd screw, 1/4 - 20 x 1 1/2
39	1745	3	Hex hd screw w/spring lockwasher, 5/16 - 18 x 1
40	385647	1	Carrying handle
41	460686	1	Cover, kingpin mounting plate
42	2018	2	Speed nut
43	2011	2	Pan hd screw, 1/4 - 20 x 1 1/4
44	1663	1	Spring pin
45	1160	2	Flat hd screw, 1/4 - 28 x 5/8
46	85610	2	Bearing
47	40956	1	Bracket, shock mount upper thrust
48	203965	1	Shock mount upper thrust
49	1211	2	Hex hd screw w/spring lockwasher, 1/4 - 28 x 5/8
50	1472	2	Slotted hd M. screw w/spring lockwasher, 1/4 - 20 x 3/4
51	901704	1	Coupling, gear shift rod
52	1341	1	Hex nut, 1/4 - 20
53	461615	1	Gear shift rod upper
54	1978	1	Spring pin
55	1020	1	Cotter pin
56	8049	1	Bowed washer
57	1987	1	Plain washer
58	1473	5	Hex nut
59	1020	1	Cotter pin
60	8535	1	Spring pin
61	111694-1	1	Latch, remote steering bracket
62	137	1	Remote steering bracket (Accessory Item)
63	58685-2	1	Connector, remote steering bracket
64	A58976-1	1	Connector, remote throttle rod end plunger assy.

+Denotes new part number

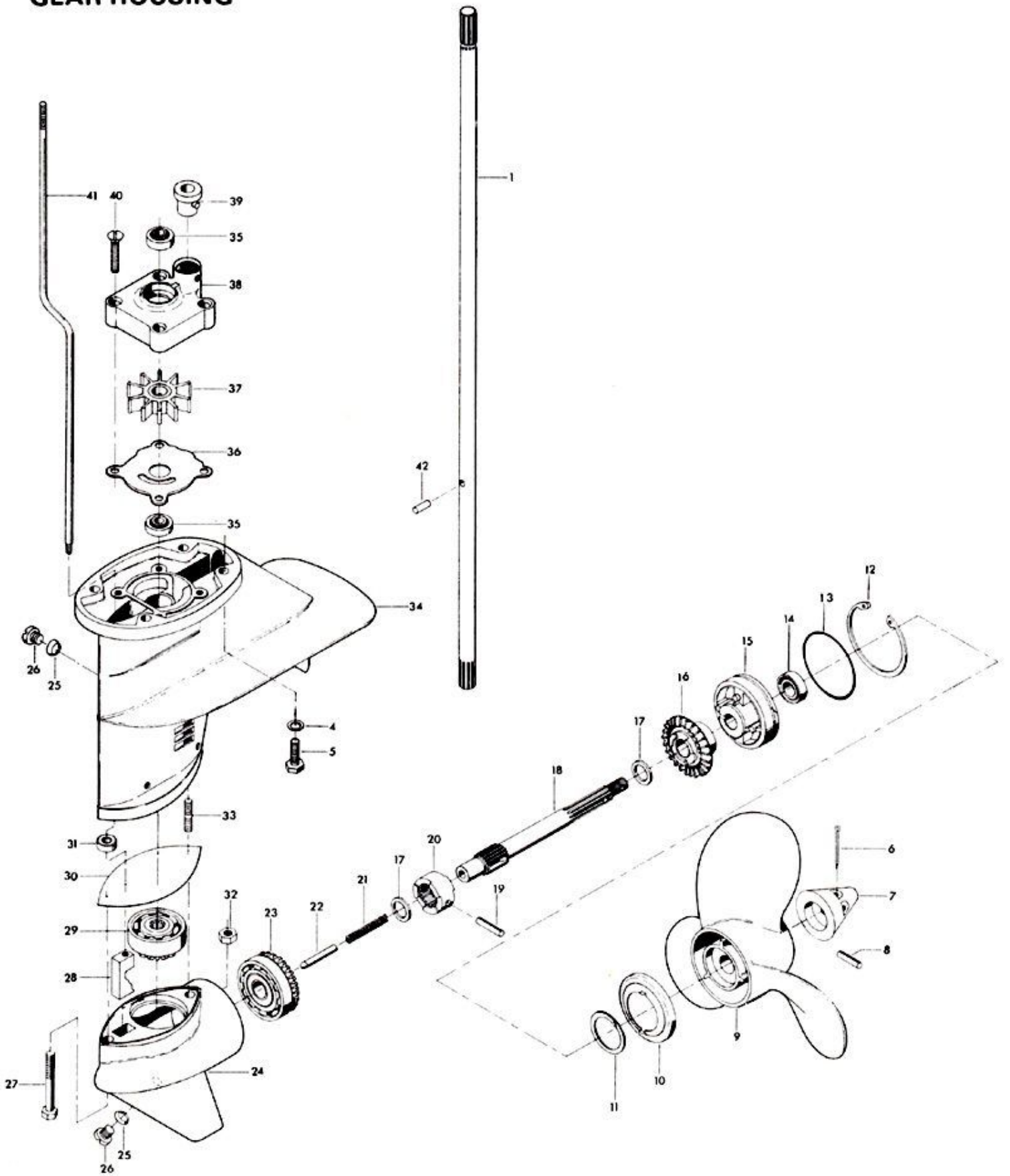
MOTOR LEG



Gear Housing

ILLUS. NO.	PART NO.	QTY.	DESCRIPTION
1	436128	1	Driveshaft for standard shaft models
4	8096	4	Spring lockwasher
5	2019	4	Hex cap screw, 5/16 - 18 x 1 1/4
6	1024	1	Cotter pin
7	461094	1	Propeller nut
8	A324101	1	Propeller pin pack of 3 w/cotter pin
9	P346	1	Propeller (Accessory Item)
10	54262	1	Weed guard
11	53983	1	Retaining ring, weed guard
12	*50411	1	Retaining ring
13	*74305	1	Seal, propeller shaft bearing cage
14	*346118	1	Seal, propeller shaft
15	*A324298	1	Propeller shaft bearing cage w/bearing & seals
16	*A437662	1	Bevel gear rear w/bearing
17	*456717	2	Thrust washer, bevel gear
18	*A437098	1	Propeller shaft
19	*1970	1	Spring pin
20	*437521	1	Clutch
21	*437719	1	Clutch spring
22	*901728	1	Clutch shift pin
23	*A437023	1	Bevel gear front w/bearing
+24	*K78054-4	1	Gear housing lower w/plug and washer
25	*8077	2	Washer, gear housing plug
26	*50109	2	Plug, gear housing
27	*1888	1	Hex socket hd cap screw, 5/16 - 18 x 2 5/16
28	*901721	1	Clutch shift cam
29	*A78266-1	1	Bevel pinion gear w/bearing
+30	483555	1	Seal, gear housing
31	338618-1	1	Seal, gear shift rod lower
32	1515	1	Finished hex nut, 5/16 - 18
33	901008	1	Stud, gear housing
34	A190554-3	1	Gear housing upper w/driveshaft seal, plug and washer
35	901307-2	2	Seal, driveshaft and water pump
36	341562	1	Back plate, water pump
37	436065	1	Impeller, water pump
38	A343060-1	1	Water pump body w/seal
39	55914	1	Seal, water line lower
40	1150	4	Flat hd screw, 1/4 - 20 x 1 1/8
41	901705-3	1	Gear shift rod lower for standard shaft models
42	901563	1	Drive pin, water pump impeller
	+C461054-1	1	Lower gear housing complete (not shown) Includes all items marked with an asterisk (*)

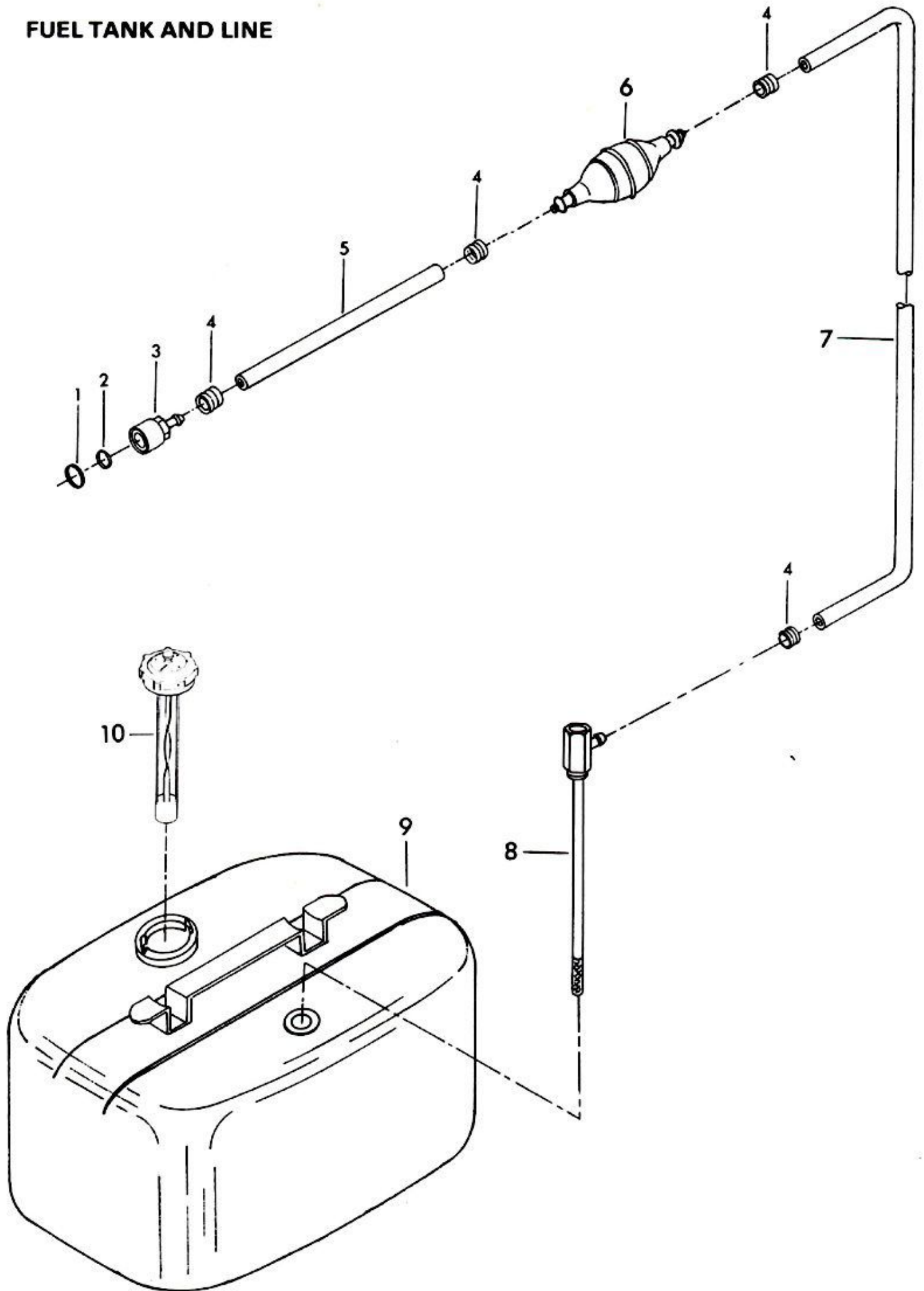
GEAR HOUSING



Fuel Tank and Line

ILLUS. NO.	PART NO.	QTY.	DESCRIPTION
1	213342	1	Seal, fuel line coupler
2	213735	1	Seal, fuel line coupler
3	197787-2	1	Fuel line coupler
4	298788	4	Ferrule
5	A84754-1	1	Fuel line short w/clamps
6	S387766-1	1	Prime bulb
7	A197752-1	1	Fuel line long w/clamps and ferrule
8	487755	1	Fuel tank adapter
9	9273	1	Fuel tank (Accessory Item)
10	213251	1	Gauge cap
	S409752	1	Fuel line complete (not shown)
	224394-3	1	Decal, fuel mixture (not shown)

FUEL TANK AND LINE



Specifications

HORSEPOWER -- 25 B. I. A. Certified Brake H. P. at 5000 R. P. M.

MOTOR -- Two-cycle, Twin Cylinder, Alternate Firing.

BORE AND STROKE -- 2 13/16" bore x 2.300" Stroke.

DISPLACEMENT -- 28.57 Cubic Inches.

CONNECTING RODS -- Forged Alloy Steel. Caged Roller Bearings at Crankshaft. Cased Needle Bearings at Piston Pin.

CRANKSHAFT -- Forged Alloy Steel. Ball Bearings at Lower Main. Roller Bearings at Center and Upper Main.

CORROSION PROTECTION -- Alodine Treated Castings, Stainless Steel Driveshaft, Propeller Shaft, Gear Shift Rod and Underwater Fasteners.

FUEL TANK -- Separate Steel Tank, 6 U. S. Gallon, 5 Imperial Gallon Capacity.

FUEL SYSTEM -- Vacuum Type Fuel Pump, Float Feed Carburetor with Fixed High Speed Jet and Adjustable Low Speed Jet.

FUEL FILTERS -- Filter Screens in Fuel Tank and Fuel Pump.

COOLING -- Water Cooled, Positive Displacement Type Water Pump.

TRANSOM HEIGHT -- 15"

WEIGHT -- 112 Lbs. for Electric Start Standard Shaft Model.

TILT LOCK -- Positive Tilt Lock Permits Engine To Remain in Tilted Position When Not in Use.

RECOMMENDED OPERATING RANGE -- 4500-5500 R. P. M.

PROPELLER -- Aluminum Alloy, 8 1/2" Diameter, 10" Pitch, Right Hand Rotation.

Lubrication Chart

LOWER GEAR HOUSING -- Check After Every Thirty (30) Hours of Operation and Replace After Every 100 Hours with a Non-Corrosive Leaded Outboard Gear Oil - EP90, such as Wards Sea King Hypoid Outboard Gear Oil - #60-9118 or equivalent. DO NOT USE A CORROSIVE HYPOID OIL UNDER ANY CIRCUMSTANCES.

CONTROL LINKAGE -- Lubricate all Moving Parts and Control Linkage with Riverside Two-Cycle Engine Oil or SAE 30 Oil Twice Each Season or Oftener if Required.

STERN BRACKET -- Lubricate Stern Bracket and Associated Parts with Riverside Two-Cycle Engine Oil or SAE 30 Oil Twice each Season or Oftener if Required.

GREASE FITTINGS -- Grease Fittings are Provided at Critical Points Where Bearing Surfaces are Not Exposed Externally. Using an Automotive type Grease Gun and Lubricant, Grease Twice Each Season or Oftener if Required.

Special Adjustments

BREAKER POINT GAP -- .020".

SPARK PLUG -- Champion L-4-J, Gap .030".

FLYWHEEL NUT -- Torque to 45 Foot Pounds.

CYLINDER HEAD BOLT -- Torque to 225 Inch Pounds.

POINT OF THROTTLE OPENING --

1. Unsnap Ball Joint Connector From Throttle Cam.
2. With Throttle Shutter in Carburetor Closed, Adjust Eccentric Screw Holding Throttle Roller to Throttle Shaft So That Pick-up Line on Lower End of Throttle Cam is Exactly Centered on Throttle Roller.
3. Advance Magneto Control Lever and Throttle Cam to Full Advance Position. (Throttle Shutter Horizontal.)
4. Adjust Ball Joint Connectors Until Spacing is Identical to Spacing Between Connector Stud on Throttle Cam and Magneto Control Lever.
5. Snap Connector in Place on Throttle Cam.